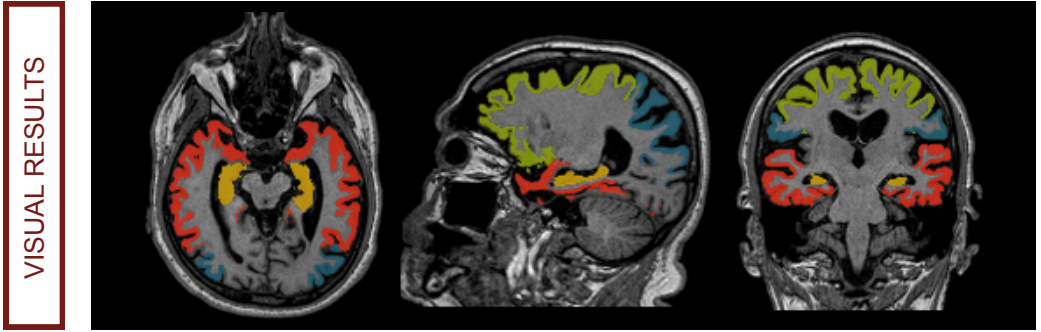
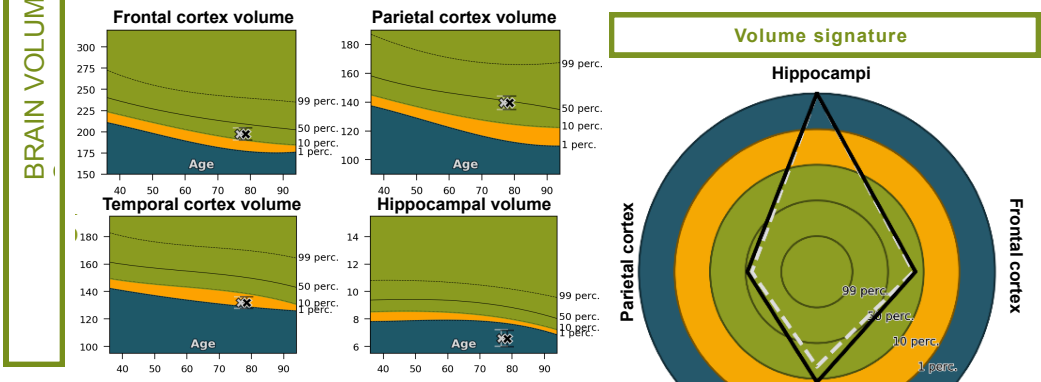


| INFO | NAME | ID | YEAR OF BIRTH | MRI DATES |
|------|-------------|--------|---------------|--------------------------|
| | icobrain dm | ICO-ID | 1940 | 2016-08-25 2018-06-22 |

| QC | STATUS | REMARKS |
|----|----------|-------------|
| | Approved | No remarks. |



| | Frontal cortex | Parietal cortex | Temporal cortex | Hippocampi |
|---------------------------------|----------------|-----------------|-----------------|----------------|
| Volume | 197 ml* | 140 ml* | 132 ml* | 6.6 ml* |
| Normal range | 177 - 240 ml* | 112 - 166 ml* | 129 - 170 ml* | 7.6 - 10.2 ml* |
| Normative percentile | 21.4 | 45.9 | 3.0 | < 1 |
| Annualized volume change | -0.61 % | -0.82 % | -2.06 % | -0.27 % |
| Normal annualized volume change | -0.23 % | -0.23 % | -0.22 % | -0.45 % |



FLAIR

| White matter hyperintensities | |
|-------------------------------|---------|
| Volume | 1.23 ml |
| Volume change | 0.02 ml |

* Displayed brain volumes are corrected for head size. The correction factor for this patient is 0.75.

This report is approved for clinical use in the US, EU, AU, BR, CA and IN. Please visit www.icomatrix.com or contact info@icomatrix.com for more information.

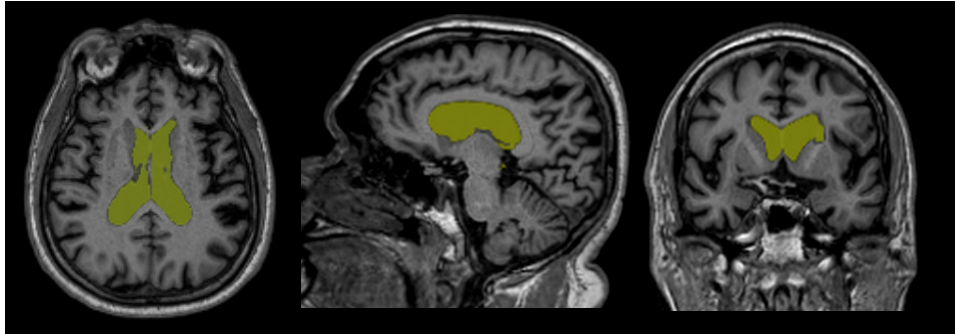
SAMPLE

icobrain 5.x.x Manufactured by icomatrix NV, Kolonel Begaultlaan 1b/ 12, 3012 Leuven, Belgium.

INFO

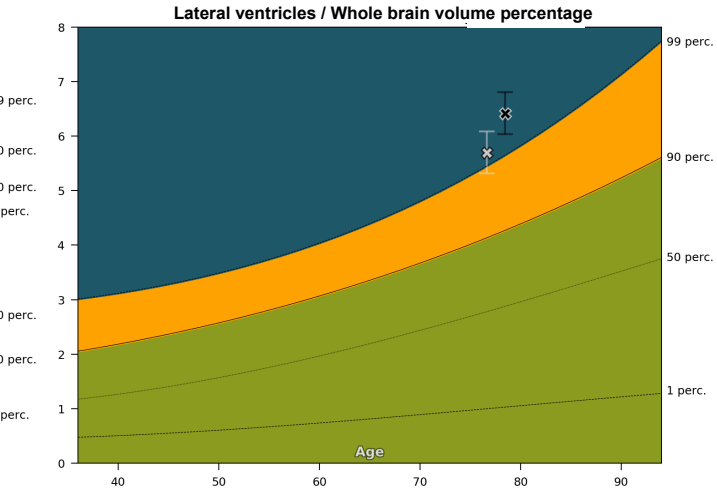
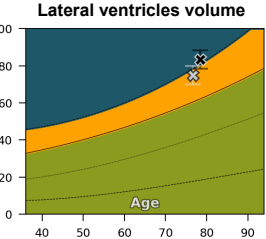
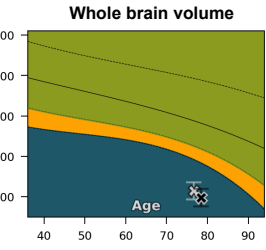
| NAME | ID | YEAR OF BIRTH | MRI DATES |
|-------------|--------|---------------|--------------------------|
| icobrain dm | ICO-ID | 1940 | 2016-08-25 2018-06-22 |

VISUAL RESULTS



BRAIN VOLUMES

| | Whole brain [WB] | Lateral ventricles [LV] | LV/WB percentage |
|---------------------------------|------------------|-------------------------|------------------|
| Volume | 1298 ml* | 83 ml* | 6.4 % |
| Normal range | 1383 - 1588 ml* | 18 - 81 ml* | 1.0 - 5.7 % |
| Normative percentile | < 1 | 99.3 | 99.3 |
| Annualized volume change | -0.71 % | 6.11 % | -201.47 % |
| Normal annualized volume change | -0.23 % | 1.80 % | 1.88 % |



* Displayed brain volumes are corrected for head size. The correction factor for this patient is 0.75.